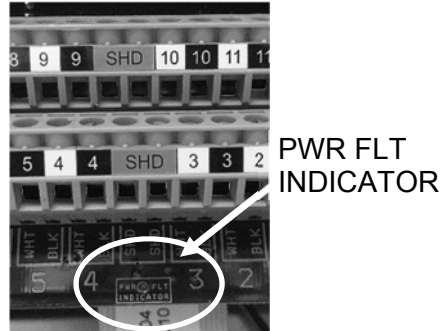
	SONARtrac[®] Technical Note	
	TN0030	
	Subject: Preamp Communication Issues and Debugging	
		Date: 27Nov2018
		Revision 01
		Page 1 of 3

Problem: Provide a method for determining preamplifier communication issues and how to isolate problems with the preamplifier.

Answer: During normal operation, the SONARtrac firmware will ping the preamplifier located within the sensor head cover for diagnostic information such as hardware and software numbers, and diagnostic voltages and temperatures. This will occur about every 10 seconds. If the transmitter cannot communicate with the preamp, the diagnostic values seen in SYSINFO file, and / or within the INFO screen of the transmitter menu, will not be available. If there are no other system failures the SONARtrac may continue to provide a valid flow reading; however, DIAGNOSTIC operations such as SENSOR CHECK or GAIN adjustment will not be possible. (As noted in the installation manual any failure during SENSOR CHECK should be confirmed by repeating the test to verify that the failure duplicates).

In the decision tree on the following pages the “Power Fault Light” (PWR FLT INDICATOR) location is on transmitter terminal board below the SHLD termination points of the sensor band cable.



The typical mA draw on the -12Vdc and / or +12Vdc preamp power lines at terminal 11 or 12 on the terminal board is $\approx 90\text{mA}$. Current limiting (PWR FLT light illuminates) occurs at $\approx 170\text{mA}$.

If the Preamp Gain is set too high such that the sensors are saturating this may result in the PWR FLT INDICATOR flashing. If the meter was properly commissioned, the gain will have been adjusted with process flow present.

IMPORTANT: Prior to trouble shooting ensure the wire pairs number 10, 11, and 12 are properly attached to their mating terminals (10 WHT/BLK, 11 WHT/BLK, 12 WHT/BLK).

A method for determining the cause of failure follows.

CiDRA Corporate Services	50 Barnes Park North	Wallingford, CT 06492
Tel. 203-265-0035	Fax. 203-294-4211	www.cidra.com



SONARtrac[®] Technical Note

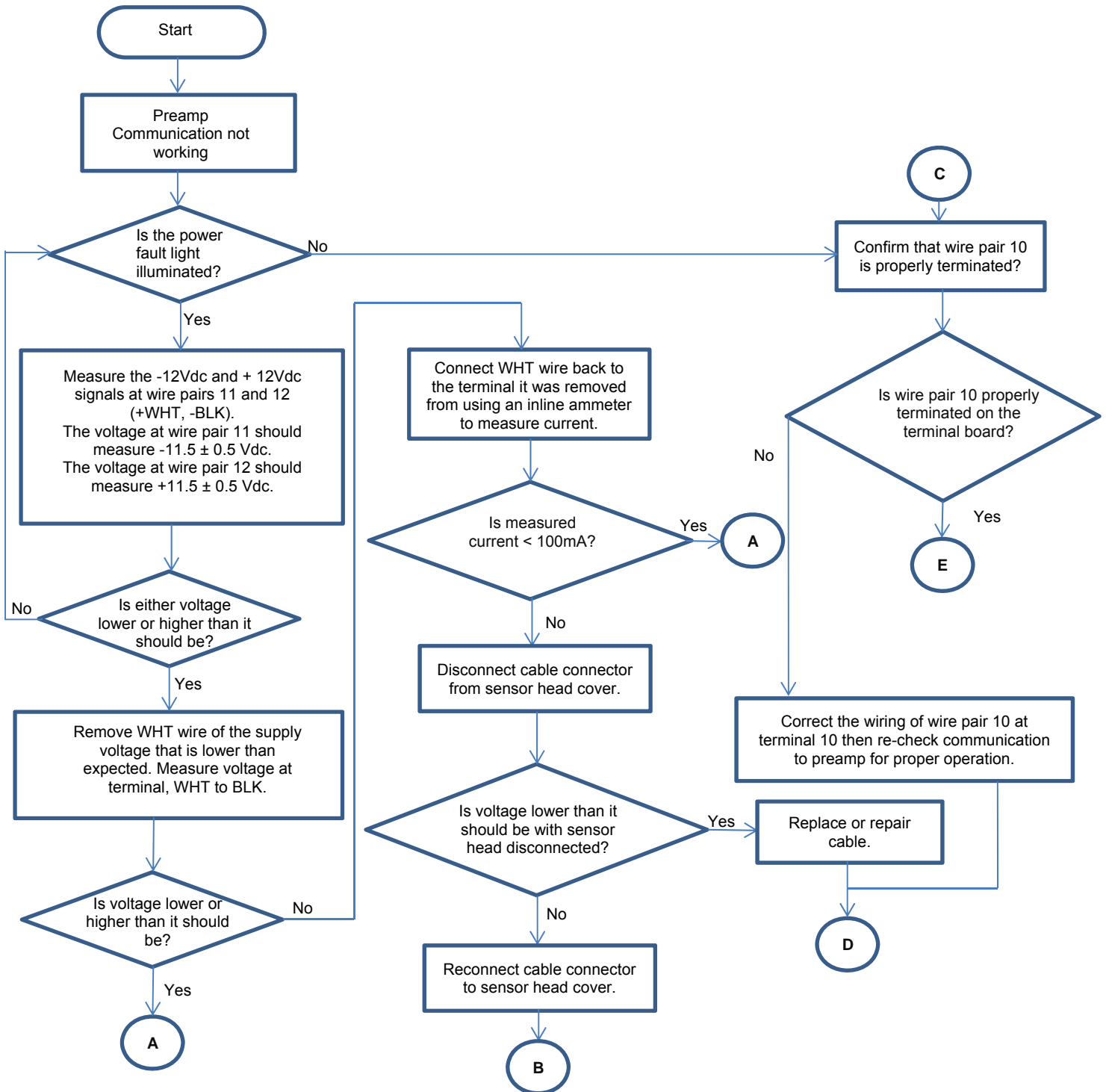
TN0030

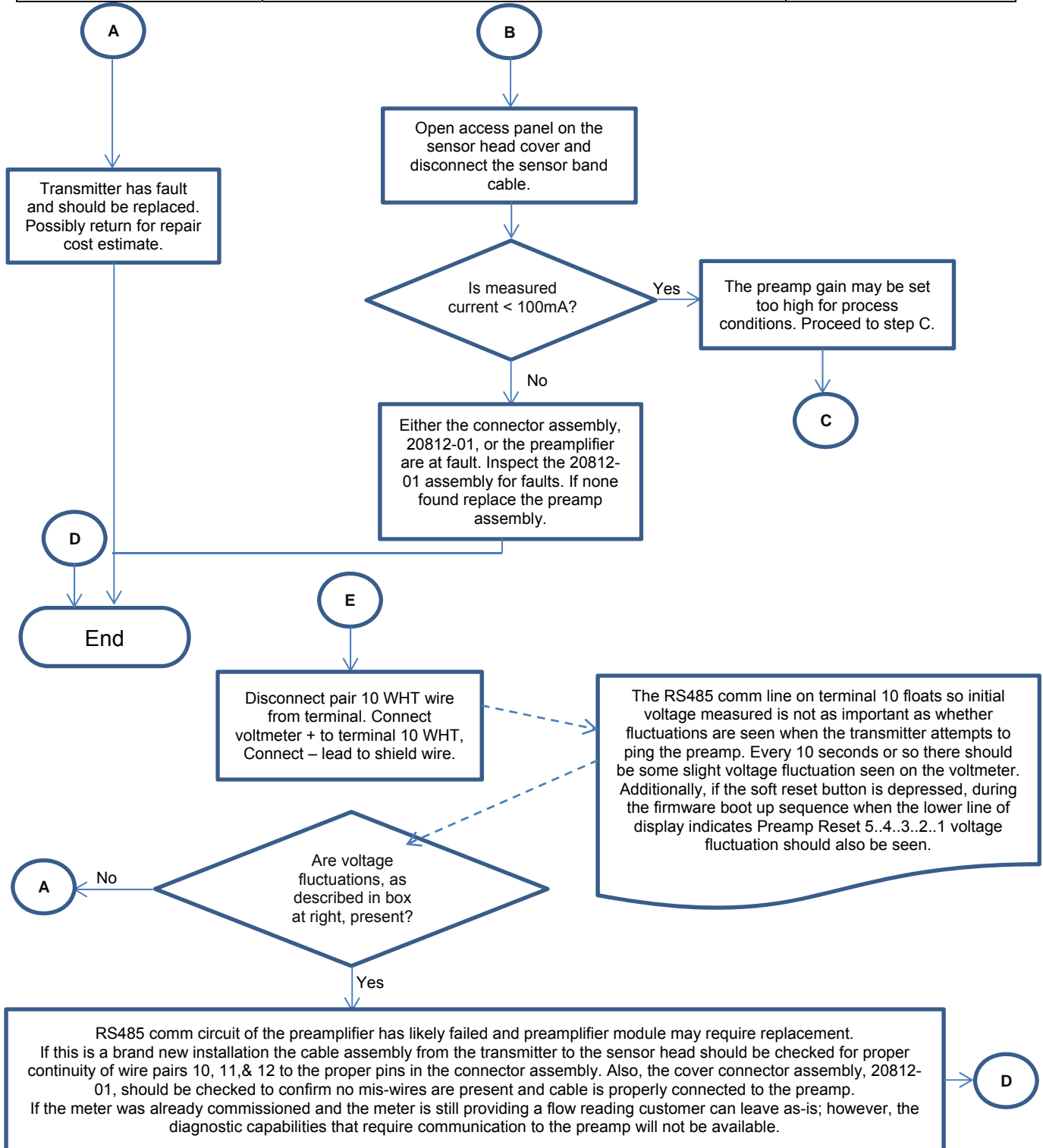
**Subject: Preamp
Communication Issues and
Debugging**


Date: 27Nov2018

Revision 01

Page 2 of 3





	SONARtrac[®] Technical Note		
	TN0030		Date: 27Nov2018
	Subject: Preamplifier Communication Issues and Debugging		Revision 01
			Page 4 of 4

Contact CiDRA Technical Support or Customer Support with any questions.

Revision History

Rev	Date	Changed By	Approved By	Change Description
01	27Nov18	T. Griffin	D. Garcia	Initial Release

CiDRA Corporate Services	50 Barnes Park North	Wallingford, CT 06492
Tel. 203-265-0035	Fax. 203-294-4211	www.cidra.com